

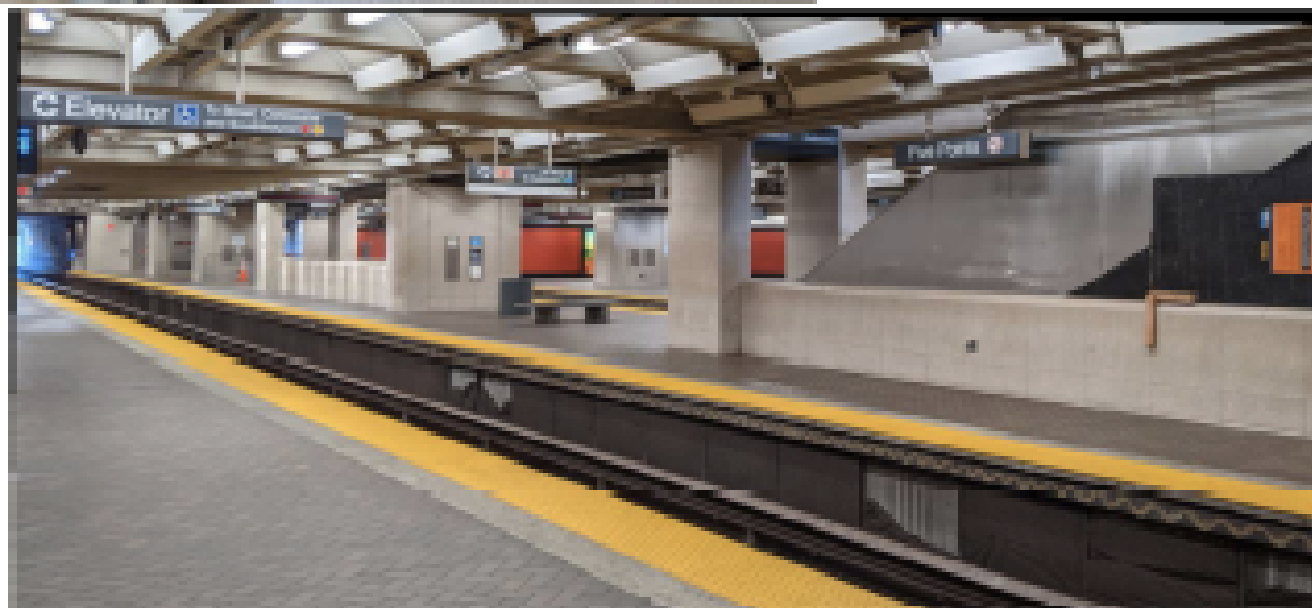
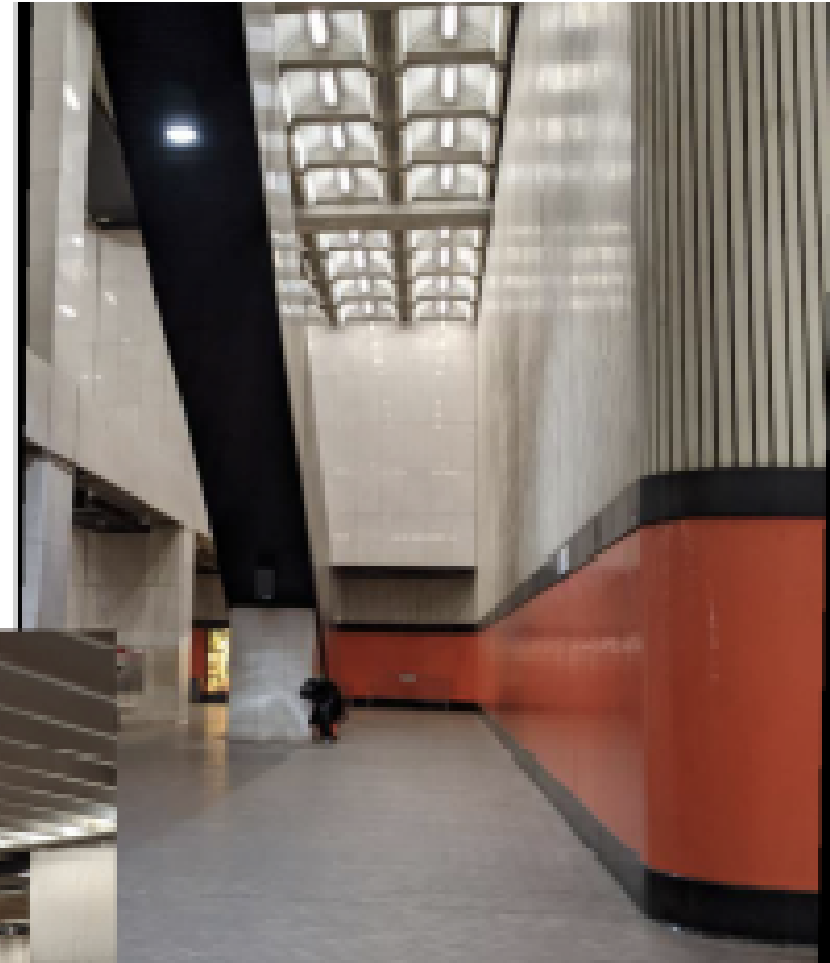
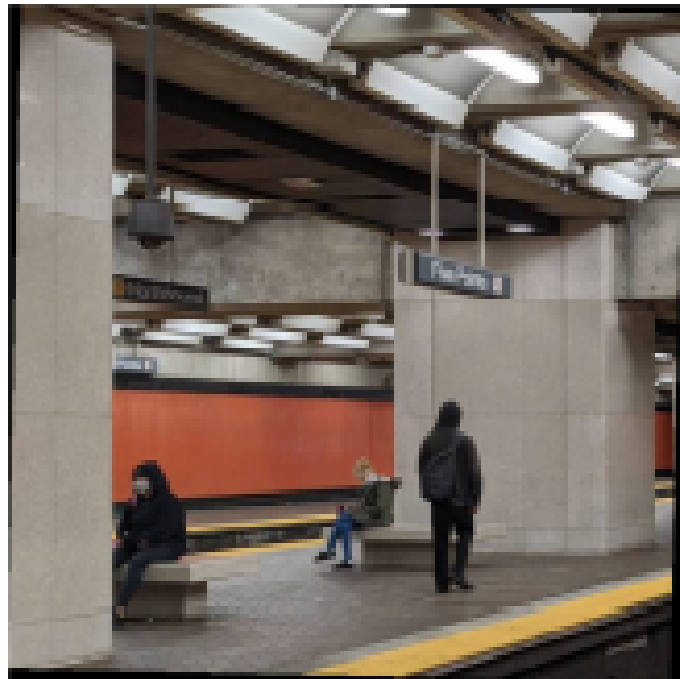
# MARTA Station Rehabilitation Program Five Points Station Update

Atlanta Downtown Neighborhood Association Meeting

Five Points Community Garden

September 14, 2021

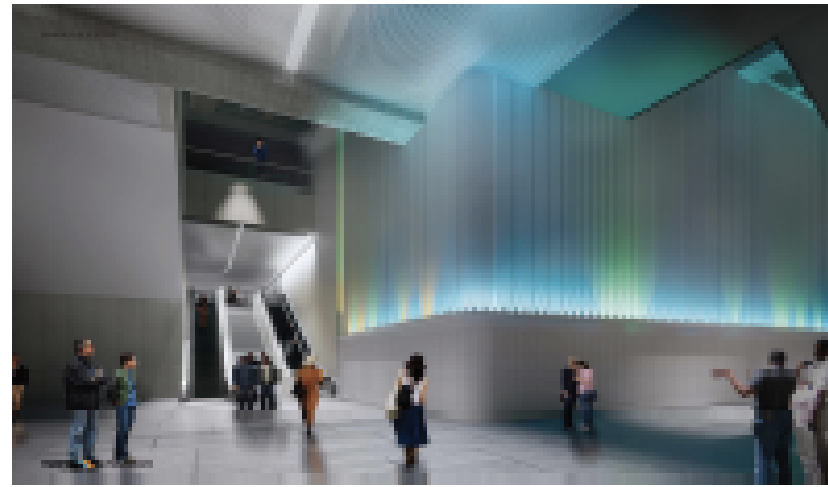




## Existing Conditions & Example of New Elements:

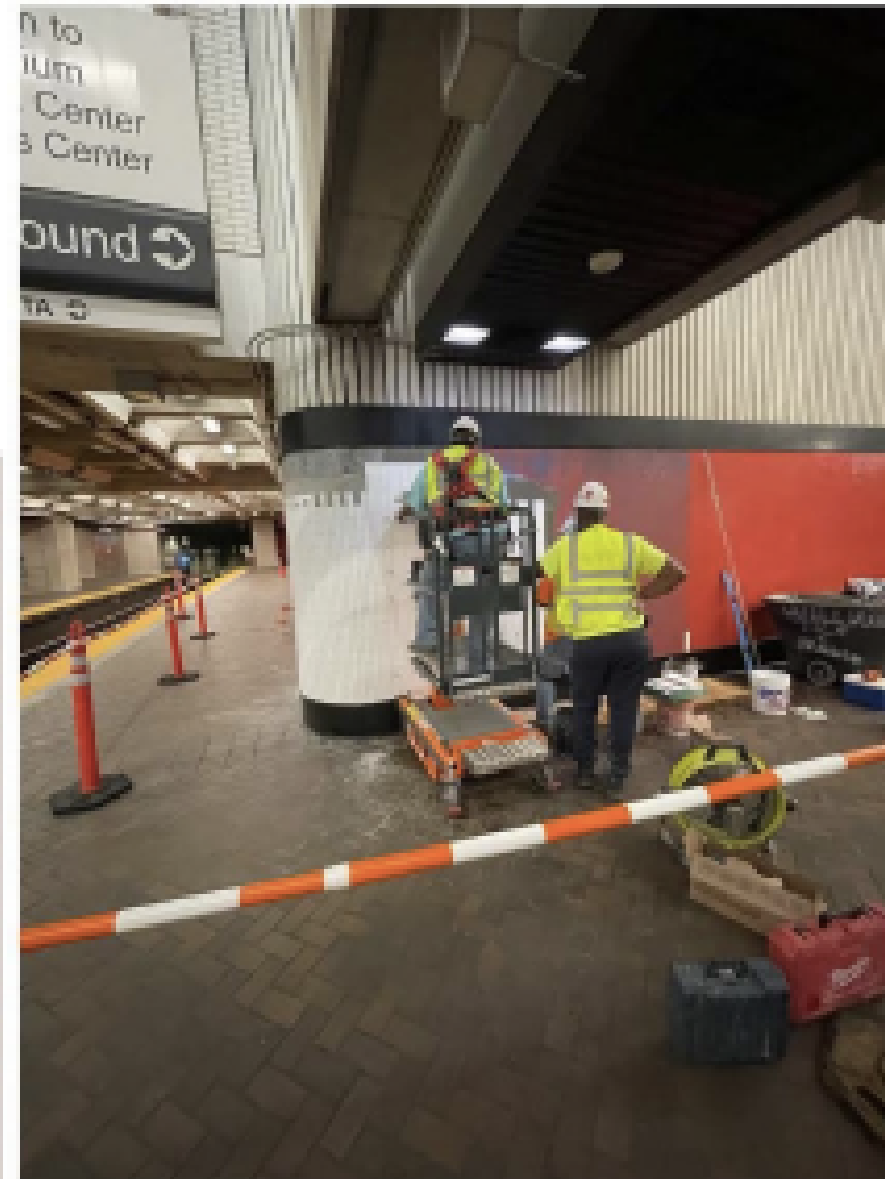
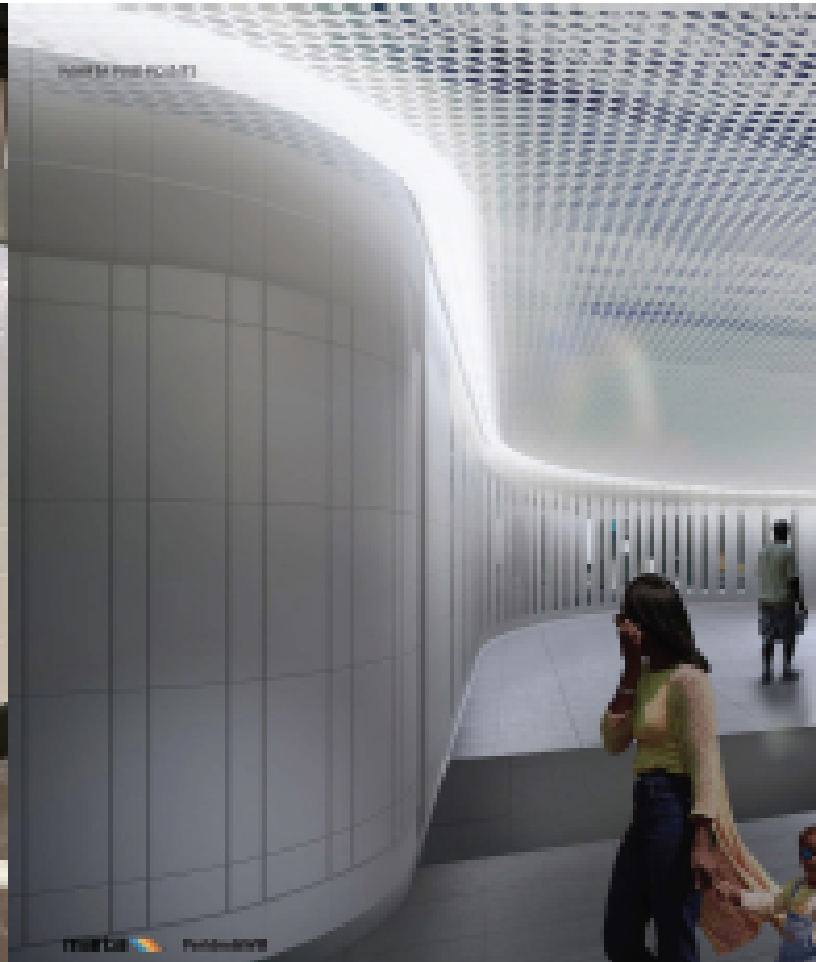
- Benches/ trash receptacles
- Tile walls
- Platform Tile Paving
- LED Lighting
- New drop ceilings/ coffered ceilings
- Expansion Joints
- Pressure washing
- Restored Eisenman Facade



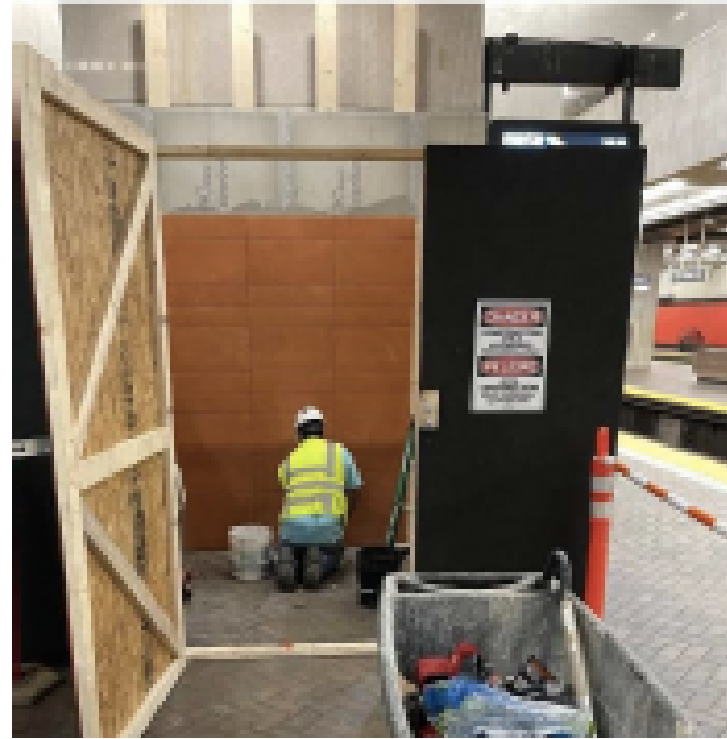


# PROPOSED CONCEPTS

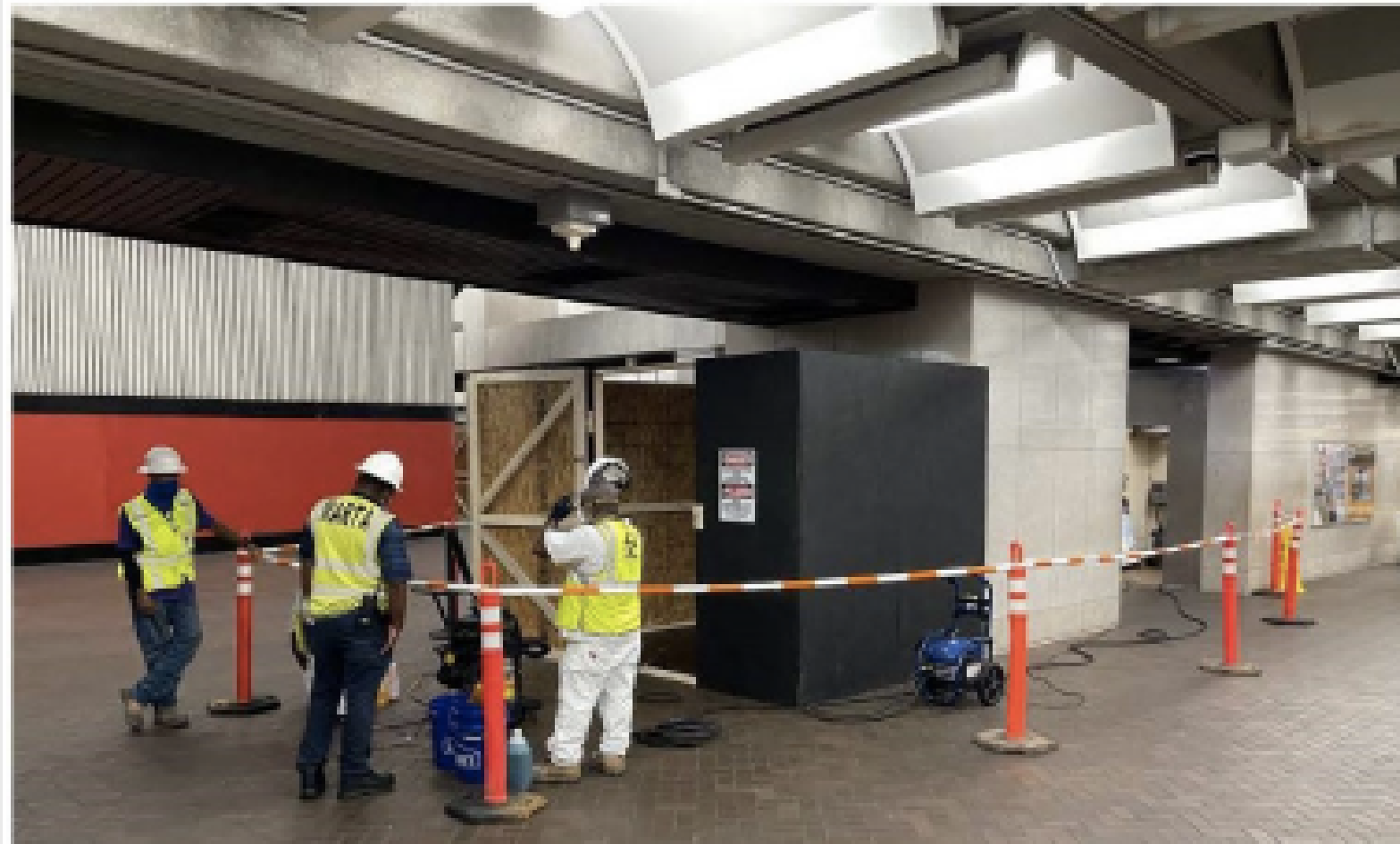
# New Tile Walls



# New Tiled Platforms & Waiting Areas



MARTA 2025 FORTY  
Typical Pivot



MARTA 2025 FORTY  
Perkins+Will

# New Tiled Platforms & Waiting Areas



Typical rivet

MARKS FIVE POINTS  
Typical Platform and Waiting Area



Typical Platform and Waiting Area



# New Floor Tile

3-Story Space



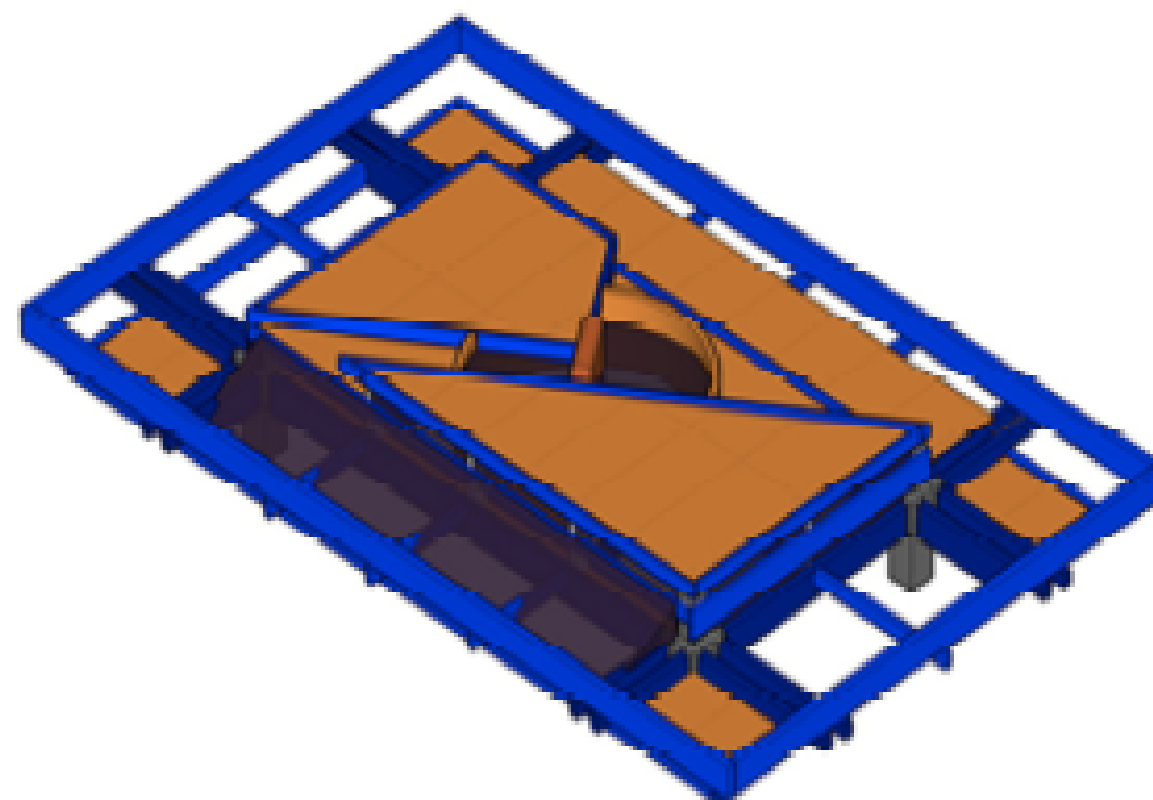
# 5 Points Canopy Deconstruction



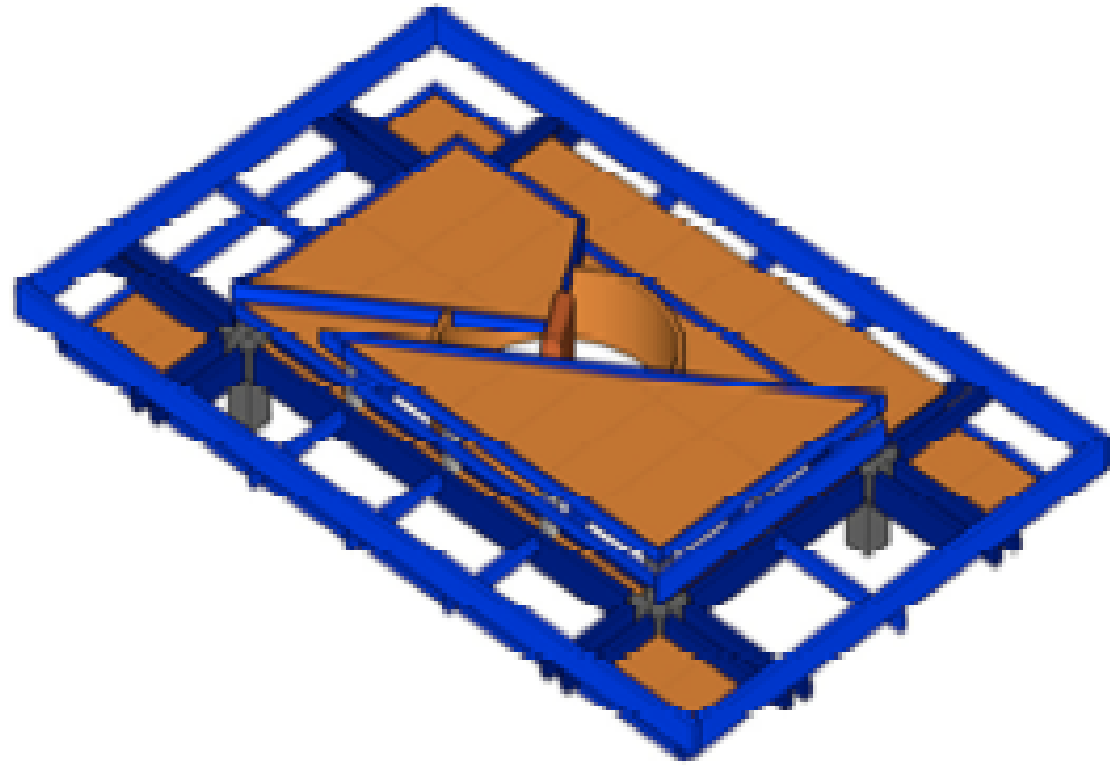




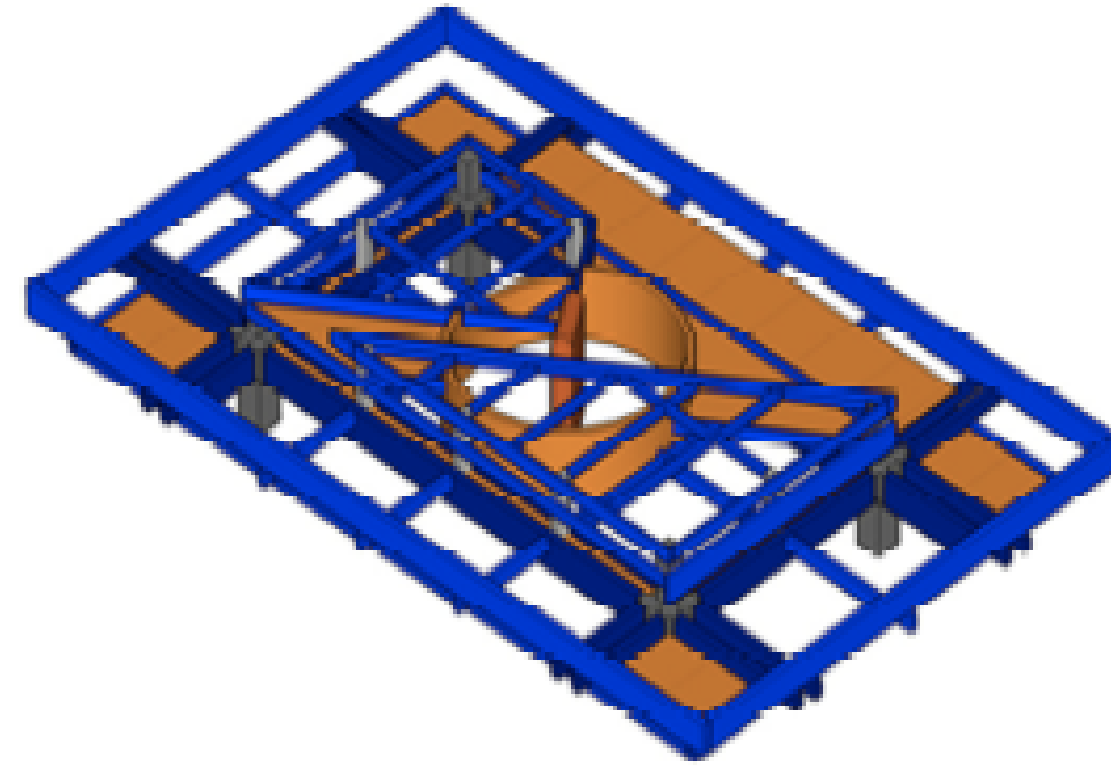
RENDERED CANOPY MODEL



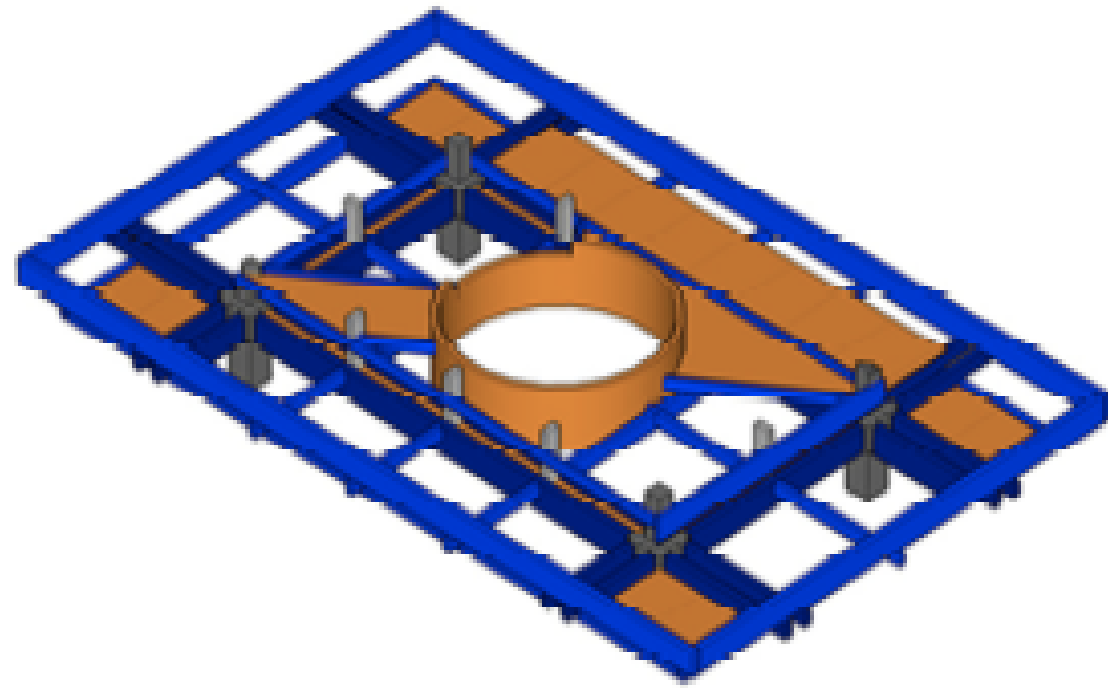
COMPUTER MODEL OF CANOPY



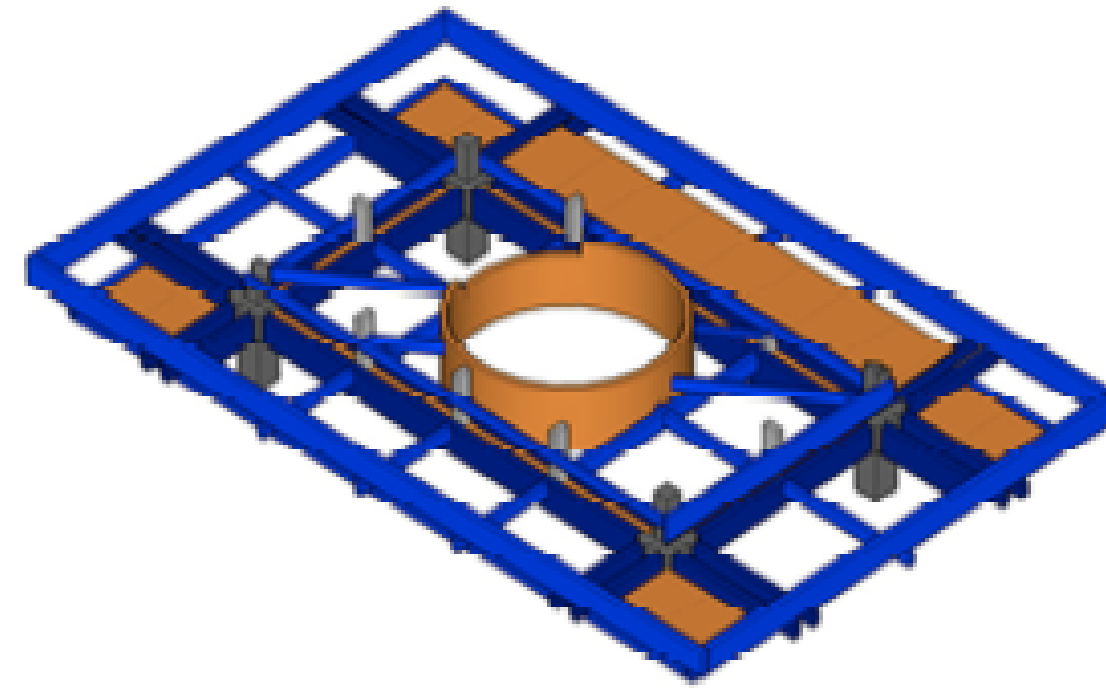
SEQUENCE 1 – REMOVE  
ROOFING AND GLAZING



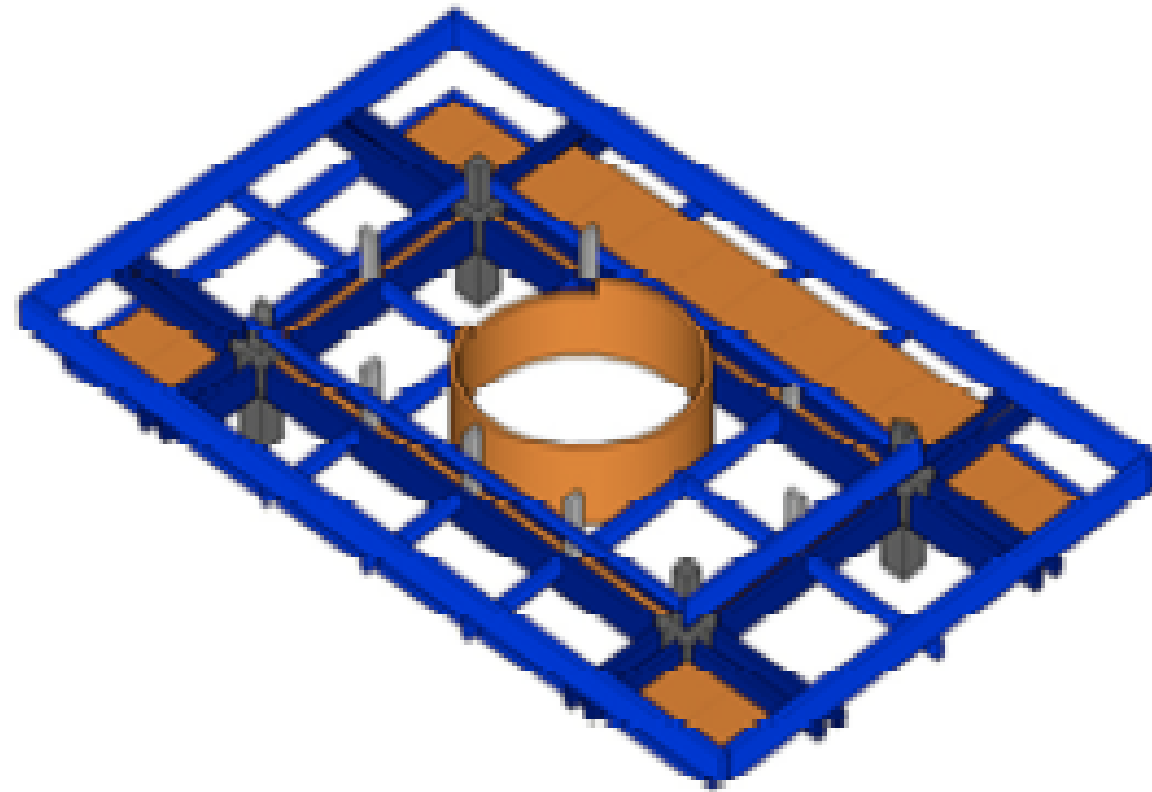
SEQUENCE 2 – REMOVE  
DECKING



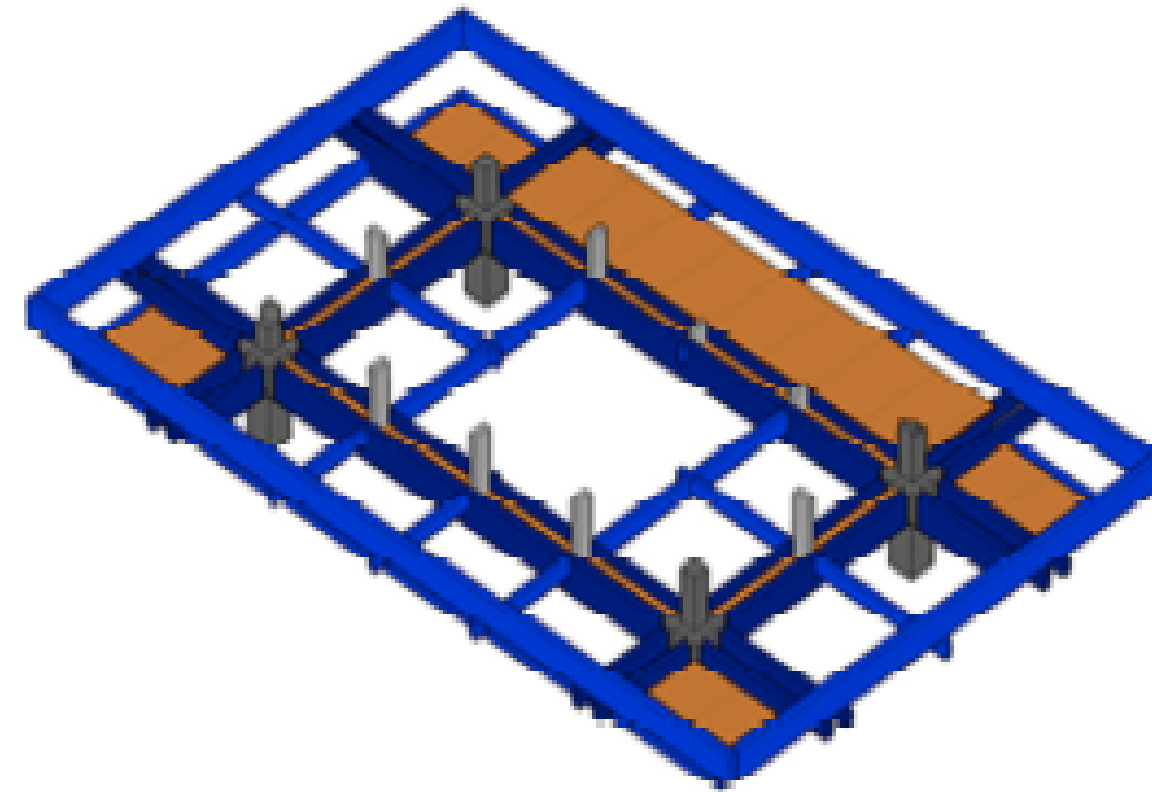
SEQUENCE 3 – REMOVE  
DECKING AND UPPER PC BEAMS



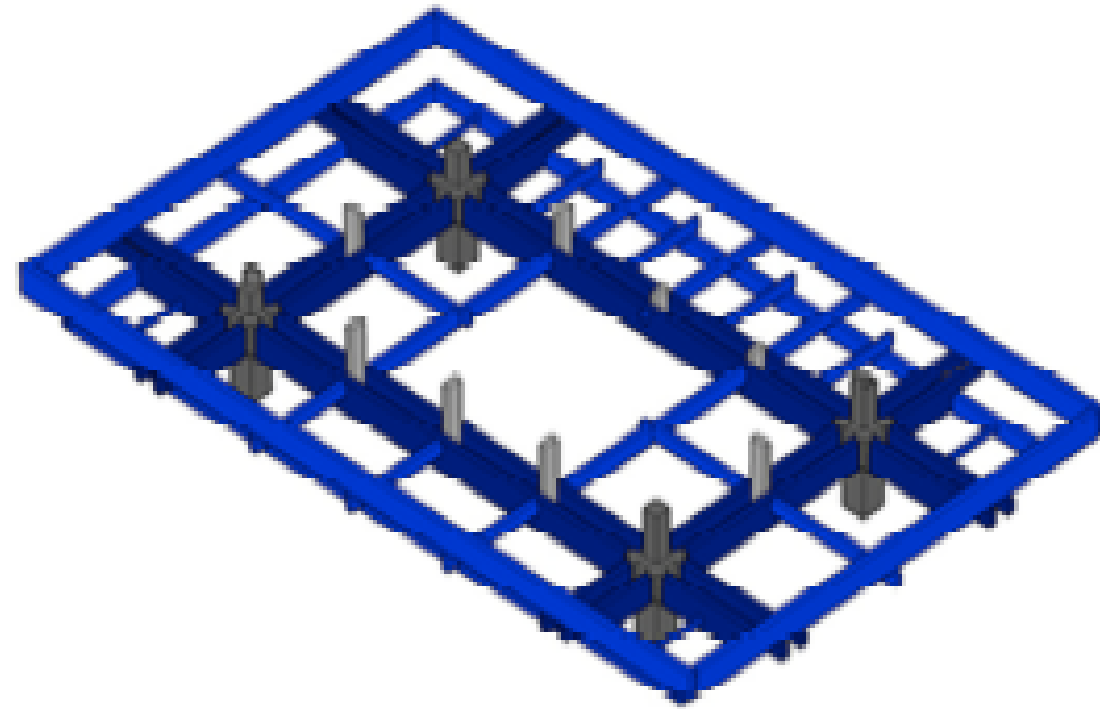
SEQUENCE 4 – REMOVE  
DECKING



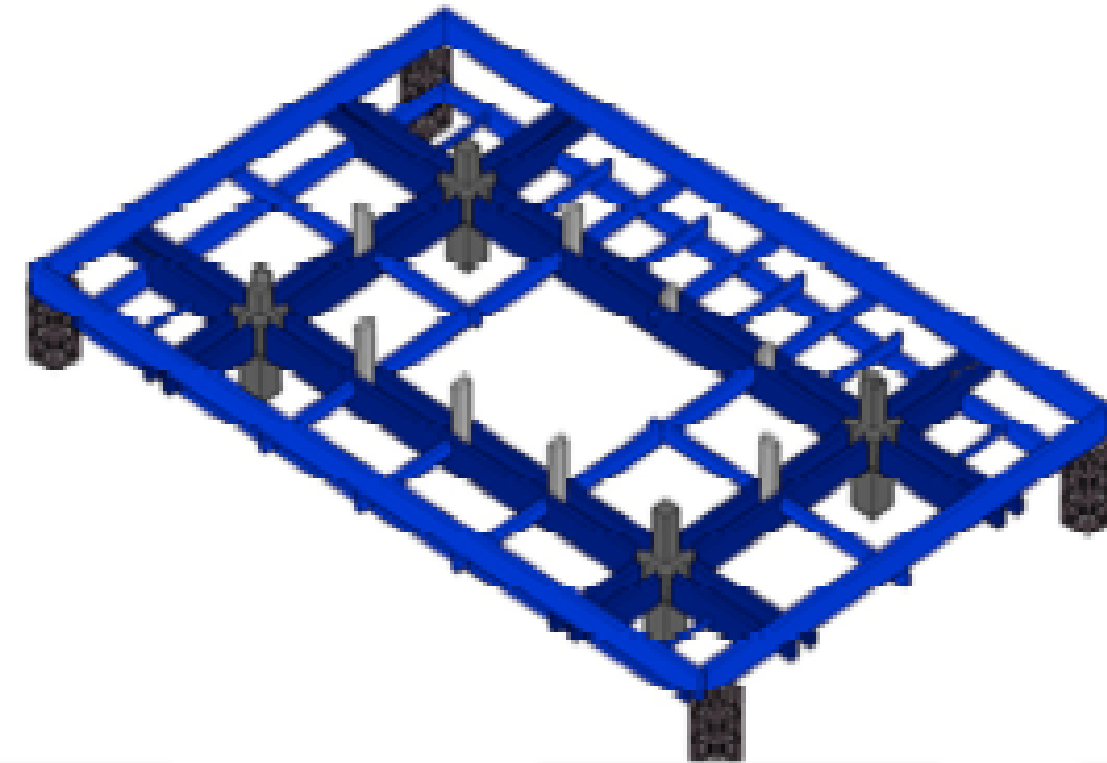
SEQUENCE 5 – REMOVE MORE  
UPPER PC BEAMS



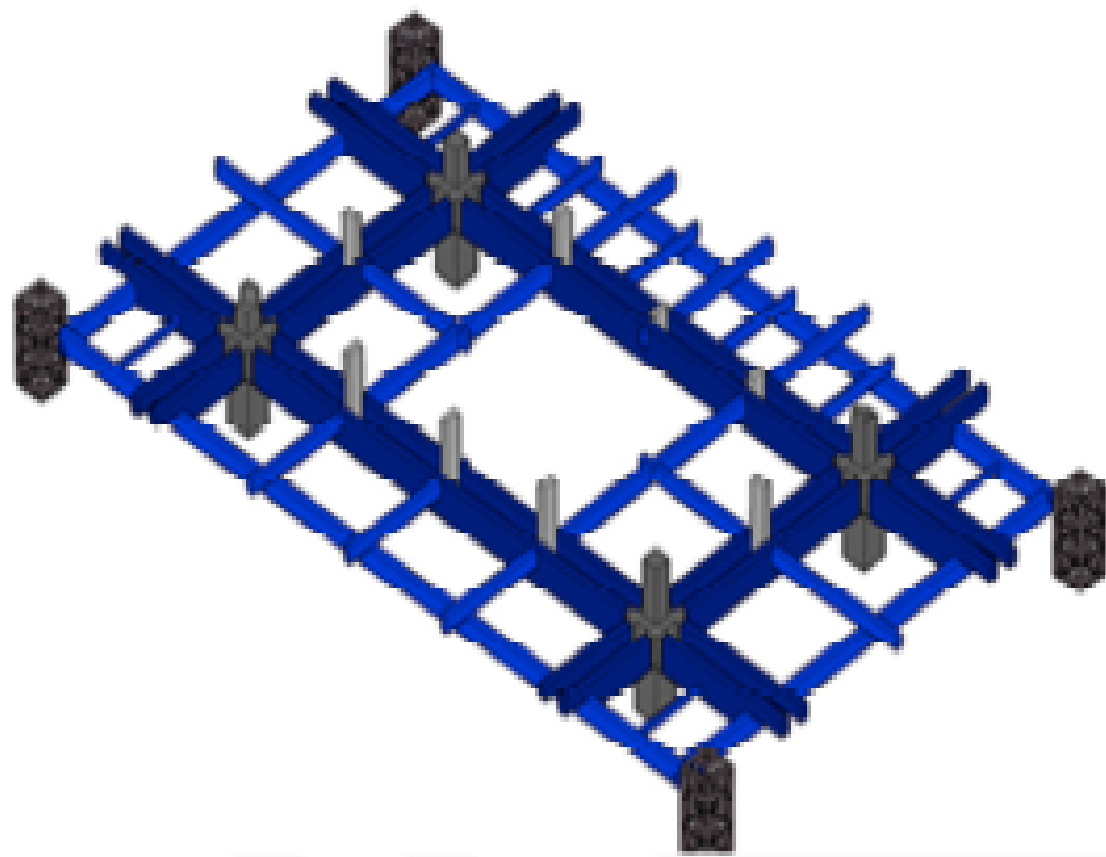
SEQUENCE 6 – REMOVE DRUM



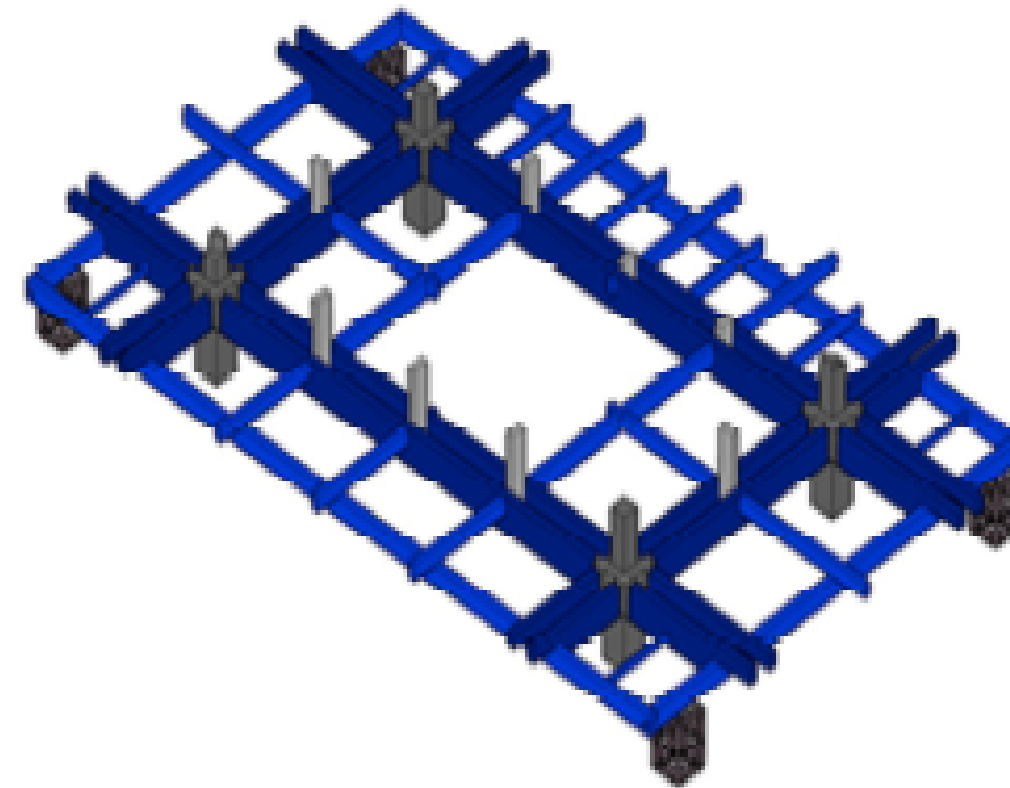
SEQUENCE 7 – REMOVE MORE  
DECKING



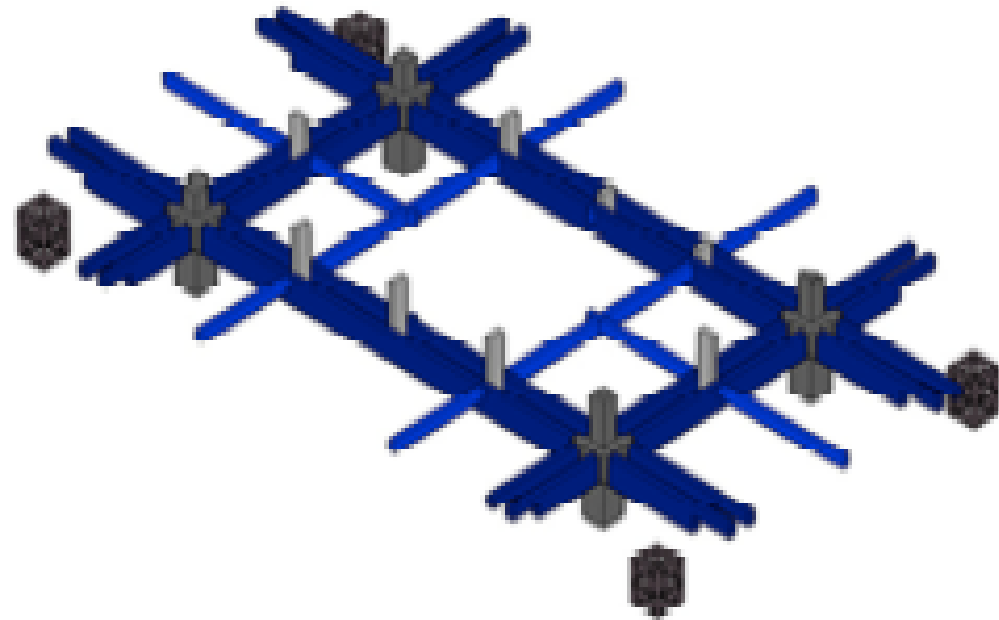
SEQUENCE 8 – SHORE OUTSIDE  
CORNERS



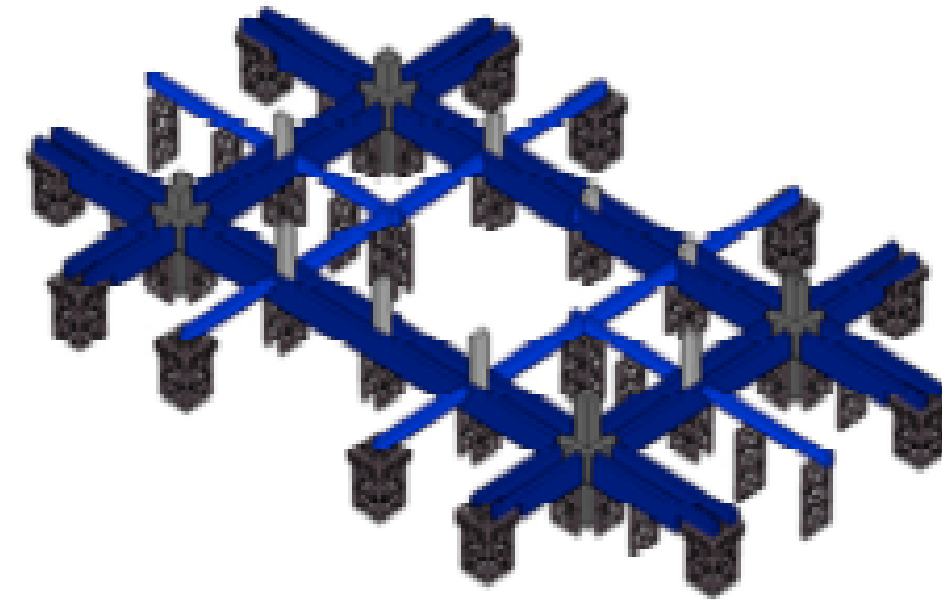
SEQUENCE 9 – REMOVE  
OUTSIDE CORNERS PIECES  
BETWEEN SUPPORT MEMBERS



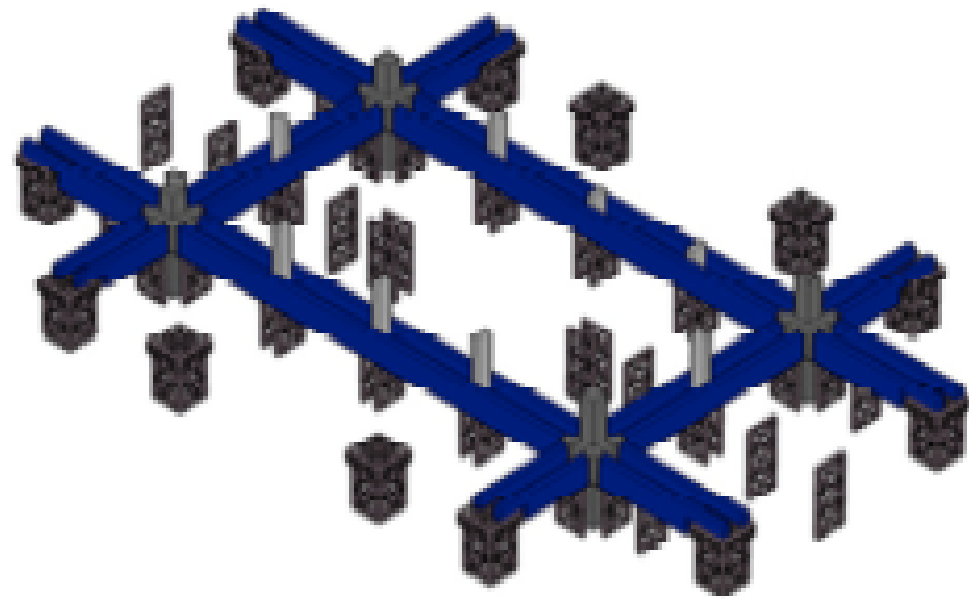
SEQUENCE 10 – MOVE SHORES  
TO NEXT RING INSIDE



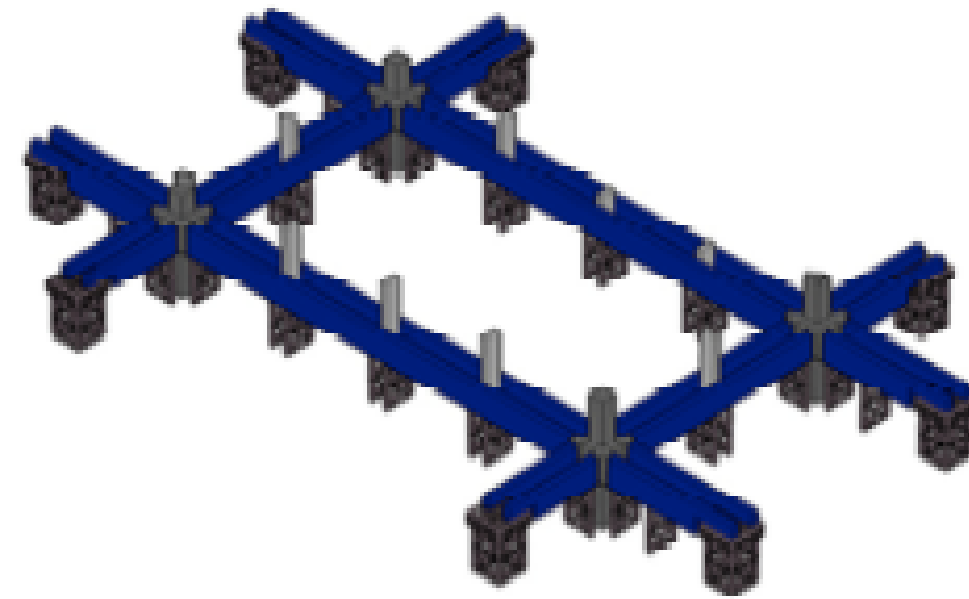
SEQUENCE 11 – REMOVE NEXT SPANDREL RING OF PC PIECES BETWEEN SUPPORT MEMBERS



SEQUENCE 12 – MOVE AND ADD MORE SHORES TO THE PRIMARY GIRDER AND BEAM STRUCTURE

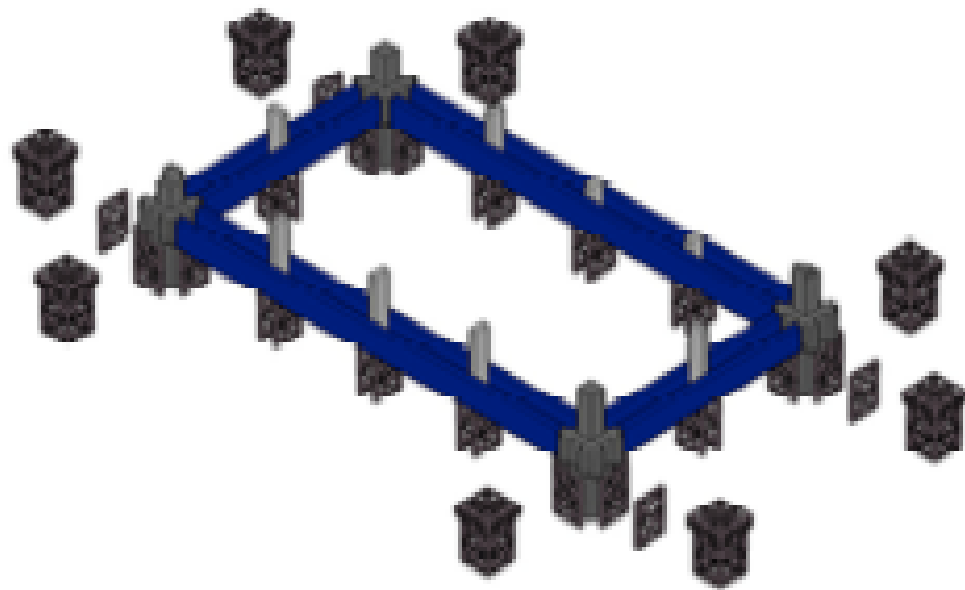


SEQUENCE 13 – REMOVE NEXT  
GROUP OF PC PIECES BETWEEN  
SHORING AND SUPPORT  
MEMBERS

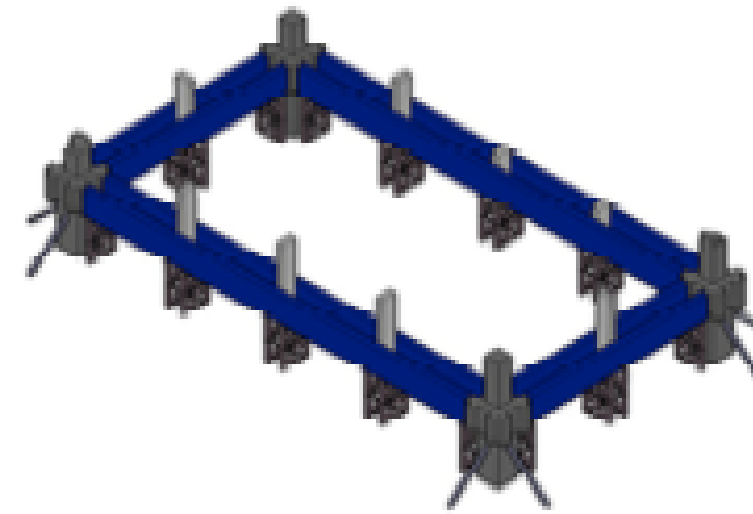


SEQUENCE 14 – REMOVE  
EXCESS SHORES AND PREP TO  
REMOVE MAIN GIRDERS

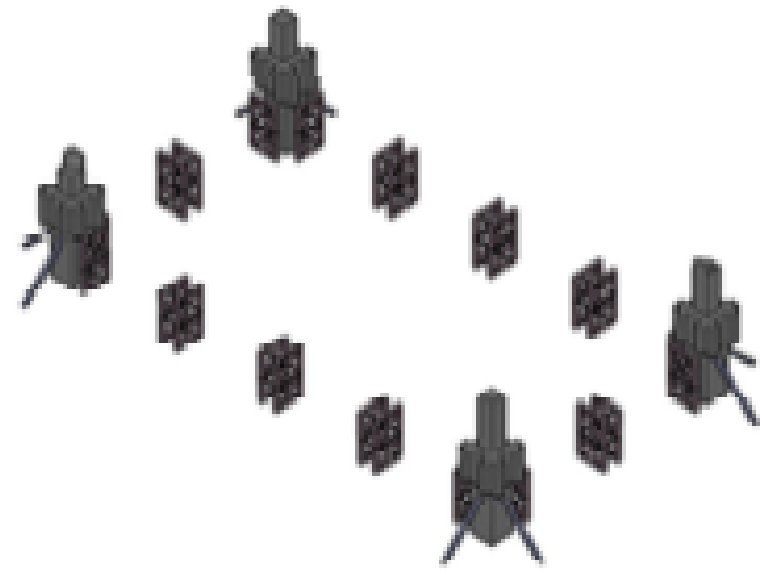




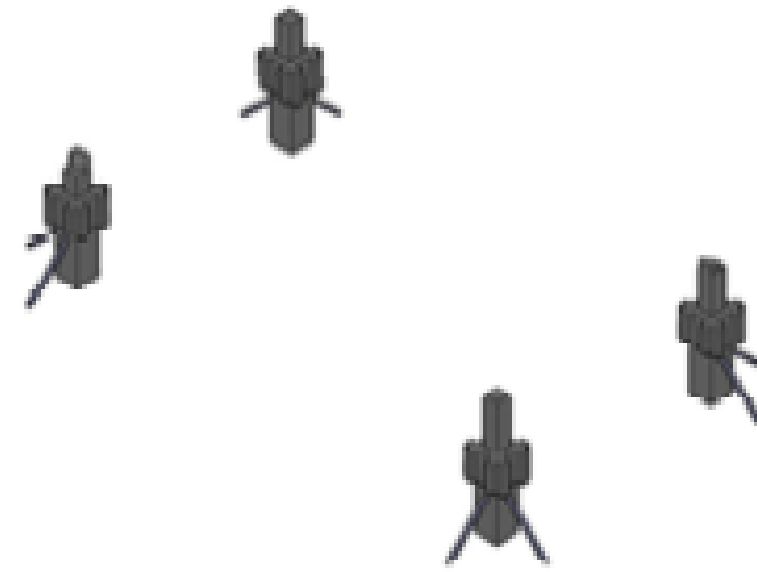
SEQUENCE 15 – REMOVE  
OUTSIDE GROUP OF PC  
BETWEEN SHORING AND  
SUPPORT MEMBERS



SEQUENCE 16 – REMOVE  
EXCESS SHORES (add BRACES  
TO COLUMNS FOR STABILITY)



SEQUENCE 17 – REMOVE  
PRIMARY GIRDERS IN SMALL  
PIECES BETWEEN SHORING AND  
SUPPORT MEMBERS



SEQUENCE 18 – REMOVE  
COLUNS AND FINAL BRACING

**marta** 

**Questions?**